



FOLLOW THE YELLOW BOAT ROAD

PENNICOTT
WILDERNESS
JOURNEYS



FREYCINET AQUA EXPRESS

Accessibility Guide





Our Vessel

Southern Edge is a Tasmanian built, 26 seat catamaran ideal for cruising the waters of the Freycinet National Park.

The features of the vessel are as follows:

- 22 individual leather seats
- 2x bench seats each seating 2 guests
- Onboard marine toilet
- Bow loading ramp for disembarking onto beaches

Departure Point in Coles Bay

Freycinet Aqua Express operates from the Coles Bay Boat Ramp.

Below is a Google Street View image of the boat ramp showing the level access to the boat.



For guests who can only walk a short distance, the boat ramp provides the ability to drive right up to the jetty for pick-up/drop-off.

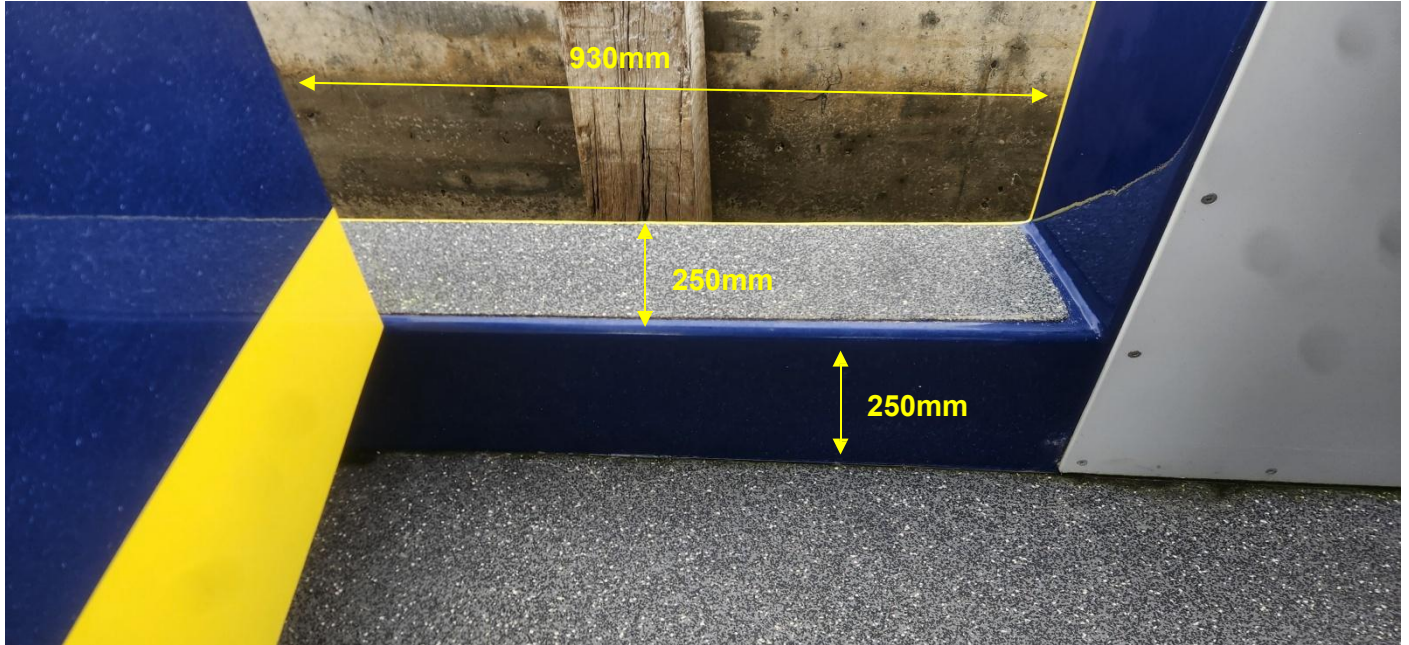
We don't have any dedicated parking for Freycinet Aqua Express but there is on-street parking throughout the township of Coles Bay.



Access onto Boat

Boarding Southern Edge is via a door at the stern (rear) of the vessel.

When the boat is alongside the jetty there is a step to get onto the boat.



Ramp onto Beach

The ramp is 630mm wide and 3.72 metres long.



Toilet Access

The toilet is accessed via a staircase within the cabin. There are four stairs down to the toilet as shown in the photos below:

