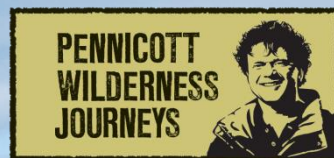


# PRODUCT RATES 2015/2016/2017

BRUNY ISLAND CRUISES, TASMAN ISLAND CRUISES, IRON POT CRUISES,  
BRUNY ISLAND TRAVELLER & TASMANIAN SEAFOOD SEDUCTION





Robert, Michaye, Mia and Noah.

## Contact Details

### Pennicott Wilderness Journeys

Phone: (03) 6234 4270

Email: [info@pennicottjourneys.com.au](mailto:info@pennicottjourneys.com.au)

Web: [www.pennicottjourneys.com.au](http://www.pennicottjourneys.com.au)

Dock Head Building, Franklin Wharf  
Hobart Tasmania 7000 Australia



**Pennicott Wilderness Journeys** was founded by Robert Pennicott in 1999. Over its sixteen year history, Pennicott Wilderness Journeys has become a highly acclaimed operator. It's won multiple awards including the prestigious **Australian Award for Excellence in Sustainable Tourism** at the 2012, 2013 & 2014 Australian Tourism Awards.

The company now operates five tourism experiences:

- Bruny Island Cruises
- Bruny Island Traveller
- Iron Pot Cruises
- Tasman Island Cruises
- Tasmanian Seafood Seduction

Robert and his family are genuinely dedicated to operating in harmony with the environment and the local community. The business employs and trains local staff, and purchases goods and services from local suppliers wherever possible.

Pennicott Wilderness Journeys is 100% Carbon Offset and an Advanced Ecotourism Certified operator. The business is assessed by EarthCheck and exceeds world's best practice standards for efficient water, fuel and energy use.

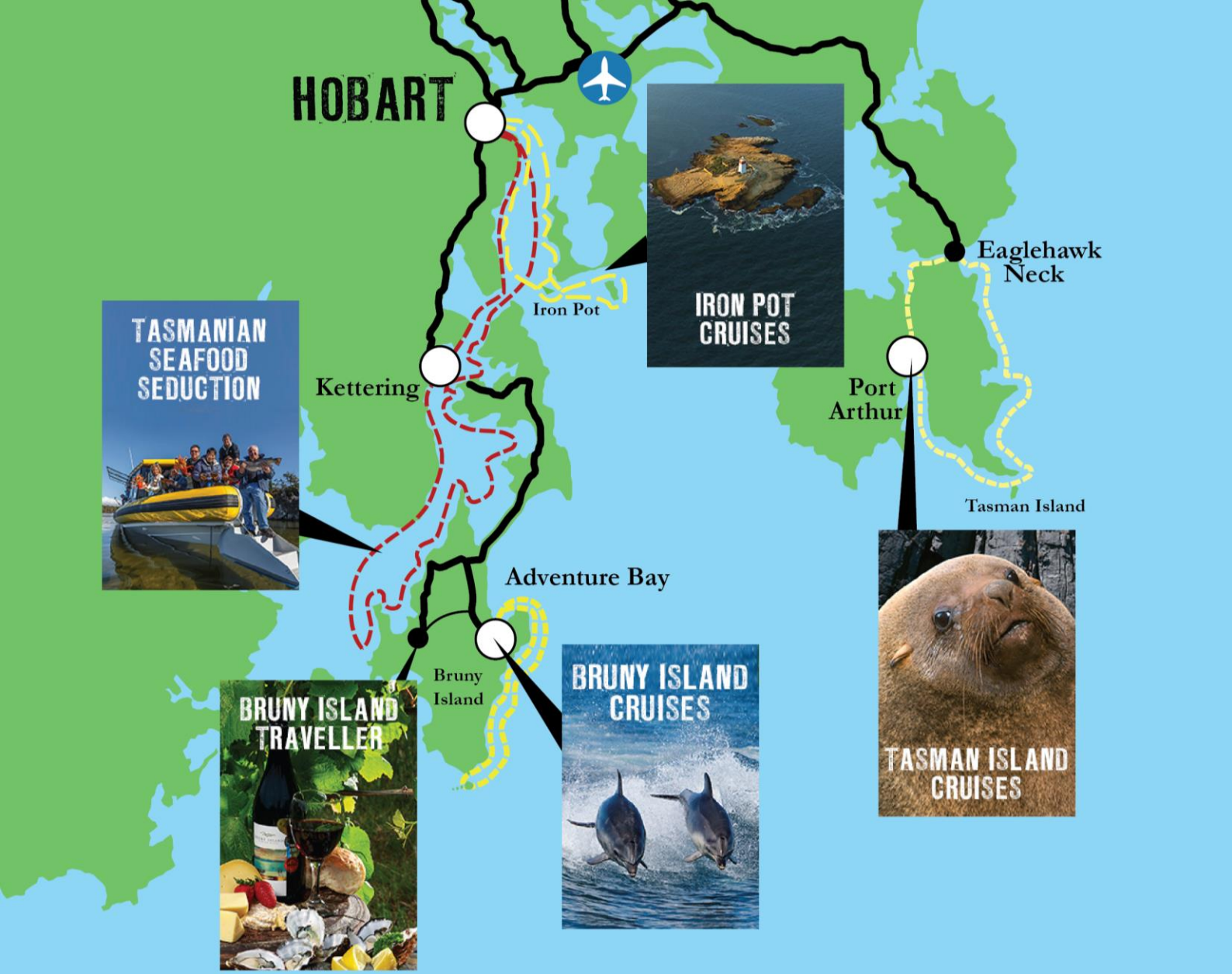
The company also donates directly to a range of conservation, humanitarian and community projects. The Pennicott Foundation has been established as the flagship for these important philanthropic activities.

Pennicott Wilderness Journeys has donated \$100,000 to coastal conservation projects undertaken by the Tasmanian Parks & Wildlife Service. The first of these was completed in June 2010 when a feral species was eradicated from Tasman Island, saving 50,000 breeding seabirds each year.

In 2011, Robert circumnavigated Australia in a 5.4 metre inflatable dinghy, raising \$300,000 for conservation and to assist Rotary's efforts to eradicate polio from the world.

Over the past year, Pennicott Wilderness Journeys has donated to over 230 charities and community organisations.





**Australia's Best  
Tourist Attraction  
2012 & 2014**

Bruny Island Cruises



**Australia's Best  
Ecotourism Product  
2009, 2012, 2013, 2014**

Bruny Island Cruises



**Excellence in  
Sustainable Tourism  
2012, 2013, 2014**

Pennicott Wilderness Journeys



**Australia's Best  
New Tourism  
Development 2014**

Tasmanian Seafood Seduction



**Best Tourist Attraction  
2006, 2008, 2009, 2010,  
2011, 2012, 2013 & 2014**

Bruny Island Cruises



**Best Ecotourism Product  
2006, 2009, 2010, 2011,  
2012, 2013 & 2014**

Bruny Island Cruises



**Sustainable Tourism  
2009, 2010, 2011,  
2012, 2013 & 2014**

Pennicott Wilderness Journeys



**Best New Tourism  
Development**

Tasman Island Cruises 2008  
Tas Seafood Seduction 2014



Australian MYOB Small Business of the Year 2008  
Australian Sensis Social Responsibility Award 2008  
Tasmanian Business of the Year 2008



tripadvisor





## Bruny Island Cruises

Bruny Island Cruises provides three hour cruises exploring the rugged coastline of Bruny Island in southern Tasmania.

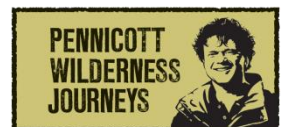
Cruise alongside some of Australia's highest sea cliffs, beneath towering crags and drift up close to listen to the awesome 'Breathing Rock'. Enter deep sea caves, pass through the narrow gap between the coast and 'The Monument', a tall slender stack – and feel the power of nature at the point where the Tasman Sea meets the might of the Southern Ocean.

Join in the search for the abundant coastal wildlife such as seals, dolphins, migrating whales and sea birds. Our highly-trained interpretive guides love what they do – they work hard to ensure that the experience is fun, enjoyable, entertaining and informative.

In 2008, Bruny Island Cruises was published in the Travel + Leisure hardcover year book as one of the Greatest 100 Trips of the World. Bruny Island Cruises was awarded Australia's Best Ecotourism Product at the Australian Tourism Awards in 2009, 2012, 2013 & 2014. The cruise has also won many state tourism awards, including Tasmania's Best Tourist Attraction 2006, 2008, 2009, 2010, 2011, 2012, 2013 & 2014.

### The Boats

The custom built yellow boats are ideal for viewing the spectacular coastline and wildlife of Bruny Island. Each vessel holds a maximum of 43 guests. Covered open-air tiered seating means an excellent all-round view and connection with the environment. Nicknamed the '4WD's of the sea' for their unequalled sea-keeping abilities these boats are safe, comfortable and gentle on the environment due to their fuel efficiency, low emission and quiet operation.



**Australia's Best Tourist Attraction 2012 & 2014**

**Australia's Best Ecotourism Experience 2009, 2012, 2013, 2014**



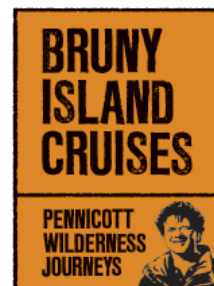




### 3 Hour Wilderness Cruise (BIC 3EC)

Join Robert Pennicott's unforgettable 3 Hour Wilderness Cruise, Australia's Best Ecotourism Experience at the Australian Tourism Awards in 2009, 2012, 2013 & 2014.

Experience Bruny Island's rugged coastline aboard a custom-built yellow boat. Explore some of Australia's highest sea cliffs, enter deep sea caves and join in the search for abundant coastal wildlife such as seals, dolphins, migrating whales and sea birds.



#### Getting There

The 3 Hour Cruise departs from Adventure Bay on Bruny Island at 11.00am. Guests should make their own way there by car, ensuring they arrive by 10.30am for check-in.

Bruny Island is accessible by a 20 minute vehicular ferry ride from Kettering, a 45 minute drive south of Hobart. Guests should plan to take either the 7.45am or 9.30am ferry. We suggest arriving at the ferry terminal at least 30 minutes prior to the ferry departure time (earlier in peak times).

#### Morning Tea & Lunch

Food is not included in the tour price, but morning tea and lunch can be purchased on the day if desired. Morning tea includes a freshly baked blueberry muffin and a hot drink. Lunch is delicious homemade pumpkin soup and a gourmet salad roll with your choice of Tasmanian Atlantic Salmon or local ham. Gluten free and vegetarian options are available on request.

#### Rates (valid until 31 March 2017)

Adults: \$125

Child: \$75 (3 to 16 years inclusive)

Family: \$390 (2 adults, 2 or 3 children)

#### Important Notes

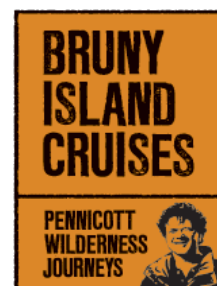
- Guests should dress warmly for the cruise. Warm jackets, scarves, beanies and gloves are recommended.
- If group has 6+ paying guests, 1x Guide FOC. If less than 6 guests then 1x Guide Half Price. Additional guides at normal rate.
- We reserve the right to charge cancellation fees as follows: 100% within 24 hours, 50% within 48 hours, 25% within 7 days.
- Children under 3 years are free of charge.





### 3 Hour Wilderness Cruise with Kettering Pick up (KETT)

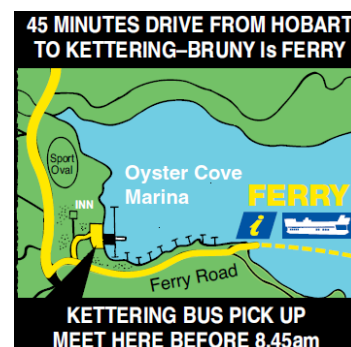
Leave your car at Kettering and catch our daily tour bus, which joins up with the 3 Hour Wilderness Cruise. You will cruise in the distinctive yellow boats, exploring some of Australia's highest sea cliffs, enter deep sea caves and join in the search for abundant sea and coastal wildlife such as seals, dolphins, migrating whales and sea birds.



#### Itinerary

- 8.30am Meet the bus at our Kettering Meeting Point
- 8.45am Bus departs, ferry crossing to Bruny Island
- 10.30am Arrive at Bruny Island Cruises Booking Centre in Adventure Bay
- 11.00am Bruny Island Cruise departs
- 2.00pm Cruise concludes
- 3.15pm Bus departs, sightseeing
- 5.00pm Arrive back at Kettering

The bus departs at 8.45am from the Oyster Cove Marina in Kettering, where there is ample free parking available. The tour includes the 3 Hour Cruise, ferry crossing and some sightseeing on Bruny Island as we travel to Adventure Bay.



#### Morning Tea & Lunch

Food is not included in the tour price, but morning tea and lunch can be purchased on the day if desired. Morning tea includes a freshly baked blueberry muffin and a hot drink. Lunch is delicious homemade pumpkin soup and a gourmet salad roll with your choice of Tasmanian Atlantic Salmon or local ham. Gluten free and vegetarian options are available on request.

#### Rates (valid until 31 March 2017)

- Adults: \$140
- Child: \$90 (3 to 16 years inclusive)
- Family: \$440 (2 adults, 2 or 3 children)

#### Important Notes

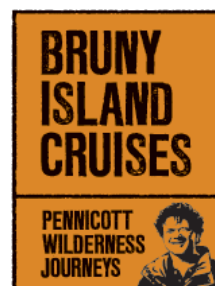
- Guests should dress warmly for the cruise. Warm jackets, scarves, beanies and gloves are recommended.
- If group has 6+ paying guests, 1x Guide FOC. If less than 6 guests then 1x Guide Half Price. Additional guides at normal rate.
- We reserve the right to charge cancellation fees as follows: 100% within 24 hours, 50% within 48 hours, 25% within 7 days.
- Children under 3 years are free of charge.





## Bruny Island Cruises Full Day Tour from Hobart (BIC FDT)

Join the Full Day Tour from Hobart for the ultimate Bruny Island Cruises experience, winner of Australia's Best Tourist Attraction 2012 & 2014. Your day includes a return guided bus tour, three hour cruise, morning tea and lunch. Robert Pennicott's multi-award winning wilderness cruise takes you along Bruny Island's rugged coastline beneath some of Australia's highest sea cliffs. You will enter deep sea caves and join in the search for wildlife such as seals, dolphins and sea birds.



### Itinerary

The Full Day Tour departs from the Pennicott Wilderness Journeys Booking Centre at 8.00am daily. This is situated on Hobart's waterfront on Franklin Wharf, next to the Constitution Dock Lifting Bridge. Guests return to Hobart by 5.30pm with CBD hotel drop-off available.

7.45am	Meet the bus at the Pennicott Wilderness Journeys Booking Centre, Hobart
8.00am	Bus departs Hobart
10.30am	Arrive at the Bruny Island Cruises Booking Centre in Adventure Bay
11.00am	Bruny Island Cruise departs
2.00pm	Cruise concludes followed by lunch
3.15pm	Bus departs
5.30pm	Arrive back in Hobart, with Hobart hotel drop-off available

### Morning Tea & Lunch

The Full Day Tour includes morning tea and lunch at our beachside café. Morning tea includes a freshly baked blueberry muffin and a hot drink. Lunch is delicious homemade pumpkin soup and a gourmet salad roll with your choice of Tasmanian Atlantic Salmon or local ham. Gluten free & vegetarian options available.

### Rates (valid until 31 March 2017)

Adults:	\$195
Child:	\$140 (3 to 16 years inclusive)

### Important Notes

- Guests should dress warmly for the cruise. Warm jackets, scarves, beanies and gloves are recommended.
- If group has 6+ paying guests, 1x Guide FOC. If less than 6 guests then 1x Guide Half Price. Additional guides at normal rate.
- We reserve the right to charge cancellation fees as follows: 100% within 24 hours, 50% within 48 hours, 25% within 7 days.
- Children under 3 years are free of charge.





## Tasman Island Cruises

Tasman Island Cruises provides unforgettable three hour wilderness cruises along the spectacular coastline between Port Arthur and Eaglehawk Neck in southern Tasmania.

The cruise travels beneath the highest vertical sea cliffs in the Southern Hemisphere and guests explore waterfalls, rock formations, archways and deep-sea caves.

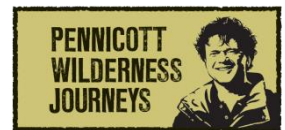
The coastline is part of the Tasman National Park and it is home to a variety of wildlife including hundreds of seals, migrating whales and abundant sea birds in their thousands.

At any time of the year you're likely to see the feeding frenzy of diving gannets, albatross and sea eagles wheeling on the wind, cliff-nesting cormorants and peregrine falcons, or a pod of playful dolphins surfing the bow wave of the boat.

Our highly-trained interpretive guides love what they do – they work hard to ensure that the experience is fun, entertaining and informative.

### The Boats

The custom built yellow boats are ideal for viewing the spectacular coastline and wildlife of the Tasman Peninsula. Each vessel holds a maximum of 43 guests. Covered open-air tiered seating means an excellent all-round view and connection with the environment. Nicknamed the '4WD's of the sea' for their unequalled sea-keeping abilities these boats are safe, comfortable and gentle on the environment due to their fuel efficiency and low emission operation.



**Sustainable Tourism**  
Pennicott Wilderness Journeys

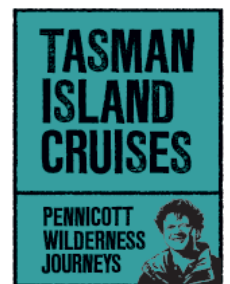






### 3 Hour Wilderness Cruise (TIC 3EC)

Join Tasman Island Cruises, an award-winning 3 Hour Wilderness Cruise along the spectacular coastline between Port Arthur and Eaglehawk Neck. The custom-built yellow boats cruise into deep-sea caves, past waterfalls, archways and to the base of Australia's highest sea cliffs. Join the search for abundant sea and coastal wildlife such as seals, dolphins, migrating whales and sea birds.



#### Cruise Departure Times

The 3 Hour Wilderness Cruise departs daily from our Tasman Island Cruises Booking Centre, located at 6961 Arthur Highway, Port Arthur. This is on the left side of the road, 100m before the Port Arthur Historic Site entrance. Guests should allow 90 minutes to drive from Hobart to Port Arthur.

There are two cruise departures and it is important that guests check in on time to allow for pre-cruise briefing and bus transfer to the boat.

- **Morning Cruise (Daily, All Year Round)** – Check in by 9.15am for the 10am cruise
- **Afternoon Cruise (15 Dec to 15 Apr)** – Check in by 1.15pm for the 2pm cruise

#### Morning Tea & Lunch

Food is not included in the tour price and guests will need to make their own arrangements. There are a number of nearby restaurants and cafés serving meals.

#### Rates (valid until 31 March 2017)

Adults: \$125

Child: \$75 (3 to 16 years inclusive)

Family: \$390 (2 adults, 2 or 3 children)

#### Important Notes

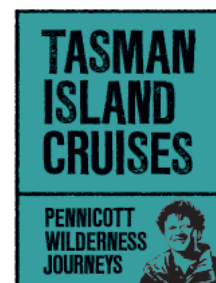
- Guests should dress warmly for the cruise. Warm jackets, scarves, beanies and gloves are recommended.
- If group has 6+ paying guests, 1x Guide FOC. If less than 6 guests then 1x Guide Half Price. Additional guides at normal rate.
- We reserve the right to charge cancellation fees as follows: 100% within 24 hours, 50% within 48 hours, 25% within 7 days.
- Children under 3 years are free of charge.





## Full Day Tour from Hobart (TIC FDT)

Take a Full Day Tour from Hobart and spend a day on the Tasman Peninsula, including return guided bus tour, morning tea and lunch. Robert Pennicott's award-winning 3 Hour Wilderness Cruise takes you along the spectacular coastline between Port Arthur and Eaglehawk Neck. The custom-built yellow boats cruise into sea caves, past waterfalls, archways and to the base of Australia's highest sea cliffs. Join the search for abundant sea and coastal wildlife such as seals, dolphins, migrating whales and sea birds.



### Tour Itinerary

The bus departs from the Pennicott Wilderness Journeys Booking Centre at 7.45am daily. This is situated on Hobart's waterfront on Franklin Wharf, next to the Constitution Dock Lifting Bridge. Guests return to Hobart by 6.00pm with Hobart hotel drop-off available.

7.30am	Meet the bus at the Pennicott Wilderness Journeys Booking Centre, Hobart
7.45am	Bus departs Hobart
9.15am	Arrive on the Tasman Peninsula for morning tea and transfer to boat
10.00am	Tasman Island Cruise departs
1.00pm	Cruise concludes followed by lunch and a local guided bus tour
4.30pm	Bus departs
6.00pm	Arrive back in Hobart, with Hobart hotel drop-off available

### Rates (valid until 31 March 2017)

Adults:	\$195
Child:	\$140 (3 to 16 years inclusive)

### Important Notes

- Guests should dress warmly for the cruise. Warm jackets, scarves, beanies and gloves are recommended.
- If group has 6+ paying guests, 1x Guide FOC. If less than 6 guests then 1x Guide Half Price. Additional guides at normal rate.
- We reserve the right to charge cancellation fees as follows: 100% within 24 hours, 50% within 48 hours, 25% within 7 days.
- Children under 3 years are free of charge.



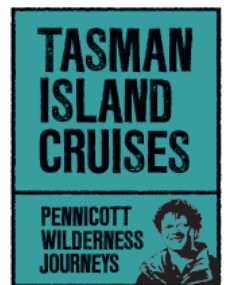


## Full Day Tour from Hobart (DEVFDT)

### *Including visit to the Tasmanian Devil Conservation Park*

Spend the day on the Tasman Peninsula, incorporating our award-winning cruise, morning tea, lunch and a visit to the Tasmanian Devil Conservation Park.

Aboard Robert Pennicott's 3 Hour Wilderness Cruise, you will explore the spectacular coastline between Port Arthur and Eaglehawk Neck. The custom-built yellow boats cruise into deep-sea caves, past waterfalls, archways and to the foot of Australia's highest sea cliffs. Join the search for abundant sea and coastal wildlife such as seals, dolphins, migrating whales and sea birds. After the cruise, you will enjoy lunch and a visit to the Tasmanian Devil Conservation Park. You can view the Tasmanian Devil as well as other native wildlife such as wallabies, kangaroos and possums, before enjoying the free-flight bird show.



### Tour Itinerary

The bus departs from the Pennicott Wilderness Journeys Booking Centre at 7.45am daily. This is situated on Hobart's waterfront on Franklin Wharf, next to the Constitution Dock Lifting Bridge. Guests return to Hobart by 6.00pm with Hobart hotel drop-off available.

- |         |   |
|---------|---|
| 7.30am  | Meet the bus at the Pennicott Wilderness Journeys Booking Centre, Hobart                |
| 7.45am  | Bus departs Hobart  |
| 9.15am  | Arrive on the Tasman Peninsula for morning tea and transfer to boat                     |
| 10.00am | 3 Hour Tasman Island Wilderness Cruise departs  |
| 1.00pm  | Cruise concludes followed by lunch and a visit to the Tasmanian Devil Conservation Park |
| 4.30pm  | Bus departs   |
| 6.00pm  | Arrive back in Hobart, with Hobart hotel drop-off available                             |

### Rates (valid until 31 March 2017)

- Adults: \$215  
Child: \$155 (3 to 16 years inclusive)

### Important Notes

- Guests should dress warmly for the cruise. Warm jackets, scarves, beanies and gloves are recommended.
- If group has 6+ paying guests, 1x Guide FOC. If less than 6 guests then 1x Guide Half Price. Additional guides at normal rate.
- We reserve the right to charge cancellation fees as follows: 100% within 24 hours, 50% within 48 hours, 25% within 7 days.
- Children under 3 years are free of charge.



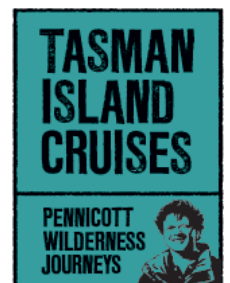


## Full Day Tour from Hobart (PAFDT)

### *Including 3 Hours at the Port Arthur Historic Site*

Spend the day on the Tasman Peninsula, incorporating our award-winning cruise, morning tea, lunch and three hours at the world heritage listed Port Arthur Historic Site.

Aboard Robert Pennicott's 3 Hour Wilderness Cruise, you will explore the spectacular coastline between Port Arthur and Eaglehawk Neck. The custom-built yellow boats cruise into deep-sea caves, past waterfalls, archways and to the foot of Australia's highest sea cliffs. Join the search for abundant sea and coastal wildlife such as seals, dolphins, migrating whales and sea birds. After the cruise, you will enjoy three hours at the Port Arthur Historic Site.



### Tour Itinerary

The bus departs from the Pennicott Wilderness Journeys Booking Centre at 7.45am daily. This is situated on Hobart's waterfront on Franklin Wharf, next to the Constitution Dock Lifting Bridge. Guests return to Hobart by 6.00pm with Hobart hotel drop-off available.

7.30am	Meet the bus at the Pennicott Wilderness Journeys Booking Centre, Hobart
7.45am	Bus departs Hobart
9.15am	Arrive on the Tasman Peninsula for morning tea and transfer to boat
10.00am	3 Hour Tasman Island Wilderness Cruise departs
1.00pm	Cruise concludes
1.30pm	3 Hours at the Port Arthur Historic Site including lunch and time to explore
4.30pm	Bus departs
6.00pm	Arrive back in Hobart, with Hobart hotel drop-off available

### Rates (valid until 31 March 2017)

Adults:	\$225
Child:	\$155 (3 to 16 years inclusive)

### Important Notes

- Guests should dress warmly for the cruise. Warm jackets, scarves, beanies and gloves are recommended.
- If group has 6+ paying guests, 1x Guide FOC. If less than 6 guests then 1x Guide Half Price. Additional guides at normal rate.
- We reserve the right to charge cancellation fees as follows: 100% within 24 hours, 50% within 48 hours, 25% within 7 days.
- Children under 3 years are free of charge.





## ***Bruny Island Traveller*** (BIT)

***A fully inclusive six-course gourmet day tour of Bruny Island.***

Join us for a day of discovery, exploring Bruny Island's spectacular landscapes and gourmet local produce.

This is the ultimate foodie's day out where every course on the menu is a stop on your journey. Savour specialty local produce including cheese, oysters, salmon, wine, bread and berries – all grown, made or harvested on Bruny.

Guests travel in small groups, led by a local guide.

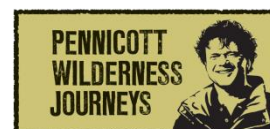
### **The People, The Place, The Produce**

Time falls away as you explore the island, hear its stories and marvel at its scenery. The light bush of the northern island gives way to the dense rainforest of the south, this pristine wilderness is home to diverse wildlife including rare white wallabies. At The Neck, see the narrow isthmus stretch away south in graceful curves. Relax and take in your surroundings as you stroll along a deserted beach, leaving your footprints in the sand.

Bruny Island is also a foodie haven. On your island journey you'll meet cheese makers, oyster farmers, fudge makers, berry farmers, viticulturists and whisky distillers to hear the stories behind the harvest.

Your six course gourmet experience includes:

- **Get Shucked Oyster Farm** – savour the clean salty flavour of oysters straight from the shell.



**Sustainable Tourism**  
Pennicott Wilderness Journeys





- **Bruny Island Cheese Company** – meet the cheese makers and enjoy award-winning cheeses.
- **Bruny Island Berry Farm** – explore the farm in season, walk through the fields of strawberries, raspberries and blackberries which you can pick and taste.
- **Bruny Island Premium Wines** – enjoy a wine tasting at Australia's southern-most vineyard before savouring a cellar door lunch of fresh seasonal island produce.
- **HIBA Fudge** – indulge in a sweet treat at the Bruny Island Chocolate Factory which is home to handmade fudges, chocolate and truffles.
- **Bruny Island House of Whisky** – finish off your day with a tasting of Tasmanian single malt whisky.

### Tour Itinerary

7.45am	Depart Hobart
8.45am	Arrive Kettering
9.30am	Ferry crossing onto Bruny Island
10.00am	Bruny Island Cheese Company
10.45am	Get Shucked Oysters
11.20am	Morning Tea at the Bruny Island Berry Farm
12.00pm	Look for White Wallabies on our private reserve
12.30pm	Mavista Rainforest
1.15pm	Lunch at Bruny Island Premium Wines
2.30pm	HIBA Bruny Island Fudge
3.00pm	The Neck
3.40pm	Bruny Island House of Whisky
4.30pm	Ferry Crossing
5.00pm	Arrive Kettering
5.30pm	Arrive Hobart

**Departs Hobart at 7.45am.** We can pick up guests from their hotel (if staying in Hobart CBD or along our tour route).

Alternatively, guests can meet at our Hobart Waterfront Booking Centre, Franklin Wharf next to the Constitution Dock Lifting Bridge.

The tour returns to Hobart at 5.30pm with Hobart CBD Hotel drop-off available.

### Rates (valid until 31 March 2017)

\$135 per person

### Cancellation Policy

In the event of a cancellation, we reserve the right to charge:

- Within 24 hours – 100% withheld
- Within 48 hours – 50% withheld
- Within 7 days – 25% withheld
- Greater than 7 days – No fee







## Iron Pot Cruises (IRON POT)

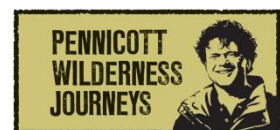
Join us for a 2½ hour cruise out of Hobart. Discover the city's rich maritime past – including tales of early shipwrecks, whales and seafarers. Visit Australia's oldest lighthouse, circumnavigate Betsey Island and return to Hobart with an appreciation of this beautiful harbour city.

Departing Franklin Wharf on Hobart's historic waterfront, you are part of a small group of up to twelve. You'll get to know your fellow companions and your skipper as we pull out of the docks.

Cruising down the Derwent River we pass historic Battery Point, now one of Tasmania's premium residential addresses. You'll see well-known landmarks like the iconic Wrest Point Casino – Australia's first, and the Shot Tower – once the ammunition manufacturing hub of Van Diemen's Land. Further south, you'll truly appreciate the scale of Mount Wellington as it towers over the city.

You will arrive at the Iron Pot, Australia's oldest lighthouse. The origins of this lighthouse are steeped in tragedy, with frequent shipwrecks resulting in an outcry from the settlement. The unique square spire is a testament to convict construction, still standing over 150 years later.

Be immersed in the fascinating history as your guide shares stories of Hobart's early settlement and the lives of the lighthouse keepers and their families. Today the Iron Pot is well known as the final turn in the famous Sydney to Hobart Yacht Race, regarded as one of the most gruelling sailing events in the world.



**Sustainable Tourism**  
Pennicott Wilderness Journeys





Continuing on we pass the point where the Derwent River meets Storm Bay before we reach Betsey Island. This uninhabited island is home to a variety of seabirds, including the majestic white bellied sea eagle.

As we circumnavigate Betsey Island, the city of Hobart disappears - the next land to your south is Antarctica.

Rounding the far side of Betsey Island, Hope Beach comes into view. This isolated beach is known for its large breaks and offshore winds. We cruise close in to the shore and feel the swell surging straight from the Southern Ocean; these conditions make this a favourite spot with local surfers.

### Highlights of Iron Pot Cruises

- **Unique view of Hobart** – cruising down the Derwent River you are treated to an amazing view of Hobart from the water, with Mount Wellington as the backdrop.
- **Australia's oldest lighthouse** – journey to the Iron Pot and learn about the early lighthouse keepers and their families who lived on the island.
- **Storm Bay** – follow the final leg of the world-renowned Sydney to Hobart Yacht Race.
- **Betsey Island** – circumnavigate this uninhabited island and search for abundant birdlife.
- **Hope Beach** – named after the infamous ship wrecked upon its shore, this beach is now a local surfing hot spot.

### Getting There

**Cruises depart daily at 2.00pm** from the Pennicott Wilderness Journeys Booking Centre, on Hobart's waterfront on Franklin Wharf, next to the Constitution Dock Lifting Bridge. There are additional departures arranged during the peak season and private charters are available on request.

### Rates (valid until 31 March 2017)

Adults: \$125

Children: \$100 (up to 16 years inclusive)

### Cancellation Policy

In the event of a cancellation, we reserve the right to charge:

Within 24 hours – 100% withheld

Within 48 hours – 50% withheld

Within 7 days – 25% withheld

Greater than 7 days – No fee







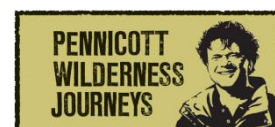
## ***Tasmanian Seafood Seduction*** (TSS)

**The Tasmanian Seafood Seduction is a new gourmet seafood cruise from the multi-award winning Pennicott Wilderness Journeys.**

Your journey begins on Hobart's vibrant waterfront, amongst the fishing boats moored at Constitution Dock. Aboard the custom-built yellow boat you'll soon get to know your companions for the day. Our intimate group of up to twelve is now ready to depart on a unique gastronomic journey, gathering the freshest Tasmanian seafood and exploring the pristine environment that is its source. There's nowhere else in the world with an experience quite like this.

We cruise down the Derwent River and into the sheltered waters of the D'Entrecasteaux Channel. Our first stop is the Tassal salmon farm, where guests see the thriving mass of thousands of salmon in their pens. Next stop is Get Shucked oyster farm, where we harvest oysters from the crystal blue water. Enjoy your first taste of the day by slurping these succulent, salty oysters straight from the shell – they don't get any fresher than this!

As we voyage south, we leave all traces of civilisation behind. The beauty of the landscape is inspiring – looking southwest, the distant peaks of the Hartz Mountains are on the horizon; to the east, the beaches and shorelines of Bruny Island. We'll pause along the way off a rocky shore, so your guide can snorkel for the hidden treasures below – wild abalone and sea urchin.



**Australia's Best New  
Tourism Development**



After collecting all our sensational seafood, it's time to sit back and enjoy lunch in a secluded bay. Relax as your guide prepares a bountiful seafood feast of abalone, sea urchin, rock lobster, sashimi, oysters, mussels and smoked salmon. This is accompanied by a gourmet spread of fresh local breads, salads and artisan cheeses, matched with Tasmanian wines, boutique beers, ciders and juices.

Savour the best of Tasmania's produce as fresh as it can be, spending a decadent few hours enjoying lunch, relaxing and sharing the afternoon with your companions in pristine surroundings.

**Throughout the day you will sample a range of local Tasmanian produce, including:**

- **Wild Abalone** – Tasmania is the world's largest source of abalone, producing 25% of the total global abalone catch. Your guide will jump in and snorkel for large wild abalone, which are prepared and served onboard the boat.
- **Southern Rock Lobster** – locally known as crayfish, this is the centrepiece of your gourmet lunch. Tasmanian Rock Lobster are extremely sought-after and exported all over the world.
- **Oysters** – pull wild oysters from the crystal clear waters around Bruny Island, grown by the multi-award winning 'Get Shucked' oyster farm.
- **Sea Urchin** – these delicious seafood delicacies are gathered straight from the crystal clear waters around Bruny Island.
- **Salmon** – Tassal produces some of Tasmania's finest salmon, with a reputation for quality and sustainability certification.
- **Moo Brew Beer** – enjoy premium craft beer made in Tasmania. Moo Brew's range includes Pilsner, Pale Ale, Dark Ale, Belgo and Hefeweizen.
- **Local Wine** – taste some of Tasmania's cool climate wine varieties including Pinot Noir, Cabernet Sauvignon, Chardonnay, Sauvignon Blanc, Riesling & Pinot Gris.
- **Cider & Organic Juices** – delicious cider and organic juices all grown and made in the local Huon/Channel region.







### Tour Summary

Tasmanian Seafood Seduction is a full day cruise gathering the freshest Tasmanian seafood from the pristine waters surrounding Bruny Island. Enjoy oysters shucked straight from the water and see your guide dive for abalone and sea urchin. Your catch will be turned into a delicious seafood feast accompanied by gourmet local produce.

Our custom-built vessels feature a spacious enclosed cabin with 12 leather seats, toilet facilities and large awning windows for a great view. At the back there's a kitchen area where we prepare your gourmet seafood experience, including:

- |                  |                   |
|------------------|-------------------|
| (1) Salmon       | (2) Oysters       |
| (3) Sea Urchin   | (4) Abalone       |
| (5) Rock Lobster | (6) Gourmet Lunch |

This is the seafood equivalent of paddock to plate – you can't get fresher than that!

### Getting There

**Cruises operate daily from 9.00am to 4.30pm.**

Boats depart from the Pennicott Wilderness Journeys Booking Centre. This is situated on Hobart's waterfront on Franklin Wharf, next to the Constitution Dock Lifting Bridge.

Each boat takes a maximum of 12 guests. However we have 3 boats available to allow us to cater for groups of up to 36 people.

### Rates (valid until 31 March 2017)

\$685 per person

### Cancellation Policy

In the event of a cancellation, we reserve the right to charge the following cancellation fees:

- Within 24 hours – 100% withheld
- Within 48 hours – 50% withheld
- Within 7 days – 25% withheld
- Greater than 7 days – No fee







**For More Information about Pennicott Wilderness Journeys**

Visit us online at [www.pennicottjourneys.com.au](http://www.pennicottjourneys.com.au)

**For Bookings & Information**

Pennicott Wilderness Journeys  
Dock Head Building, Franklin Wharf  
Hobart Tasmania 7000 Australia  
Phone: +61 3 6234 4270  
[info@pennicottjourneys.com.au](mailto:info@pennicottjourneys.com.au)